



新総建設株式会社

SHINSOU CONSTRUCTION Co.,Ltd.

Shinsou Construction Co., Ltd.  
7th floor, Fujimotodaiichiseimei Building,  
3-3-1,Chuo, Chuo-ku, Chiba City, Chiba Prefecture  
TEL: 043-225-8501 FAX:043-225-8503 [http://  
www.shinsou.jp/](http://www.shinsou.jp/)



We will continue our business with the aim of creating a comfortable environment for both people and nature.

Shinsou Construction was established in May 1974 with civil engineering, marine civil engineering, dredging and land construction as the main business. As a construction company that provides high-quality technical services to public and private companies with the experience and technology cultivated so far, strengthens and improves construction technology to maintain and restore social infrastructure, and thoroughly implements a safety management system, we will do our best to fulfill our social responsibility.



<https://www.wakachiku.co.jp/>  
Our company is a company of  
Wakachiku Construction Group.

## Message from the President

---



Our company was founded in Chiba Prefecture in May 1974 as a group company of Wakachiku Construction Co., Ltd., a pioneer in marine civil engineering. For over 50 years since then, we have primarily engaged in infrastructure development through port and harbor civil engineering, land reclamation and dredging, and land civil engineering.

In recent years, amidst significant changes in the construction industry, including efforts to improve working conditions and other work-style reforms, as well as the promotion of ICT and DX (Digital Transformation) due to the dramatic advancements in information technology, we will continue to strive to fulfill our social responsibility as a construction company by ensuring customer satisfaction, while firmly passing on the "construction technology" we have cultivated to the next generation and prioritizing "quality and safety."

We sincerely ask for your continued patronage and support.

Representative Director, Tomokazu Tsuyama

# Company Profile

---

## Trade name

---

Shinsou Construction Co., Ltd.

## Founded

---

May 22, 1974

## Representative

---

Representative Director Yoshihiro Nogami

## number of employees

---

39 people

## Capital

---

¥60,000,000-

## Business description

---

1. Investigation and construction of civil engineering work.
2. Investigation, survey and construction of dredging, landfill and harbor structures.
3. Leasing and maintenance management of ships, machinery, and vehicles
4. Marine transportation business, coastal shipping business, harbor transportation business and cargo transportation business.
5. Collection of gravel stones and sales of civil engineering materials.
6. Investigation, surveying and contracting of environmental maintenance, conservation, tree planting and pollution prevention construction.
7. Any business incidental to the preceding items

## Construction license number

---

Minister permission (Special-29) No. 014477

## Construction industry type

---

Civil engineering, scaffold work, pavement, dredging, steel structure, landscaping, water supply facilities

## Main customer

---

[Government] Chiba Prefecture, Chiba City, Miyagi Prefecture, Shiogama City [Private] Aoki Construction Co., Ltd., Aomi Construction Co., Ltd., Goyo Construction Co., Ltd., Seiho Industry Co., Ltd., Taiho Construction Co., Ltd., Tsuda Shipping Co., Ltd., Toa Corporation, Toyo Construction Co., Ltd., Hashimototen Co., Ltd., Honma Corporation, Rinkai Nissan Construction Co., Ltd., Wakachiku Construction Co., Ltd.

## ISO approval registration

---

I S O 9 0 0 1 : 2 0 1 5、I S O 1 4 0 0 1 : 2 0 1 5

# Owned ship

---

## Major ships and machinery

---



Wakawashi Maru:  
Grab dredger and all swivel hoist



Ryuo:  
Multipurpose hoist ship with spud



No.8 Taiki go:  
Caisson work platform



No.20 Otori Maru



Clean sweeper No.2

# Construction results

---

## Main construction excerpts

---



"Concrete mixer ship" concrete placement work



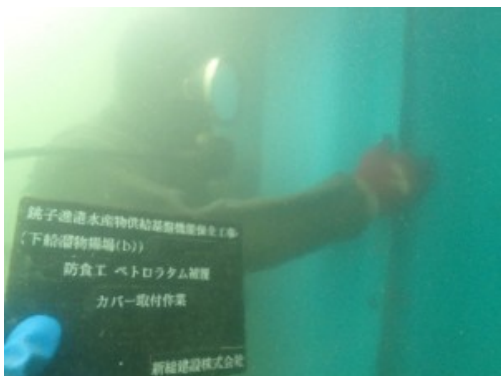
"Wakawashi Maru" grab dredging construction



"WTS-1000" Spreadig sand construction



"Ryuo" grab dredging construction



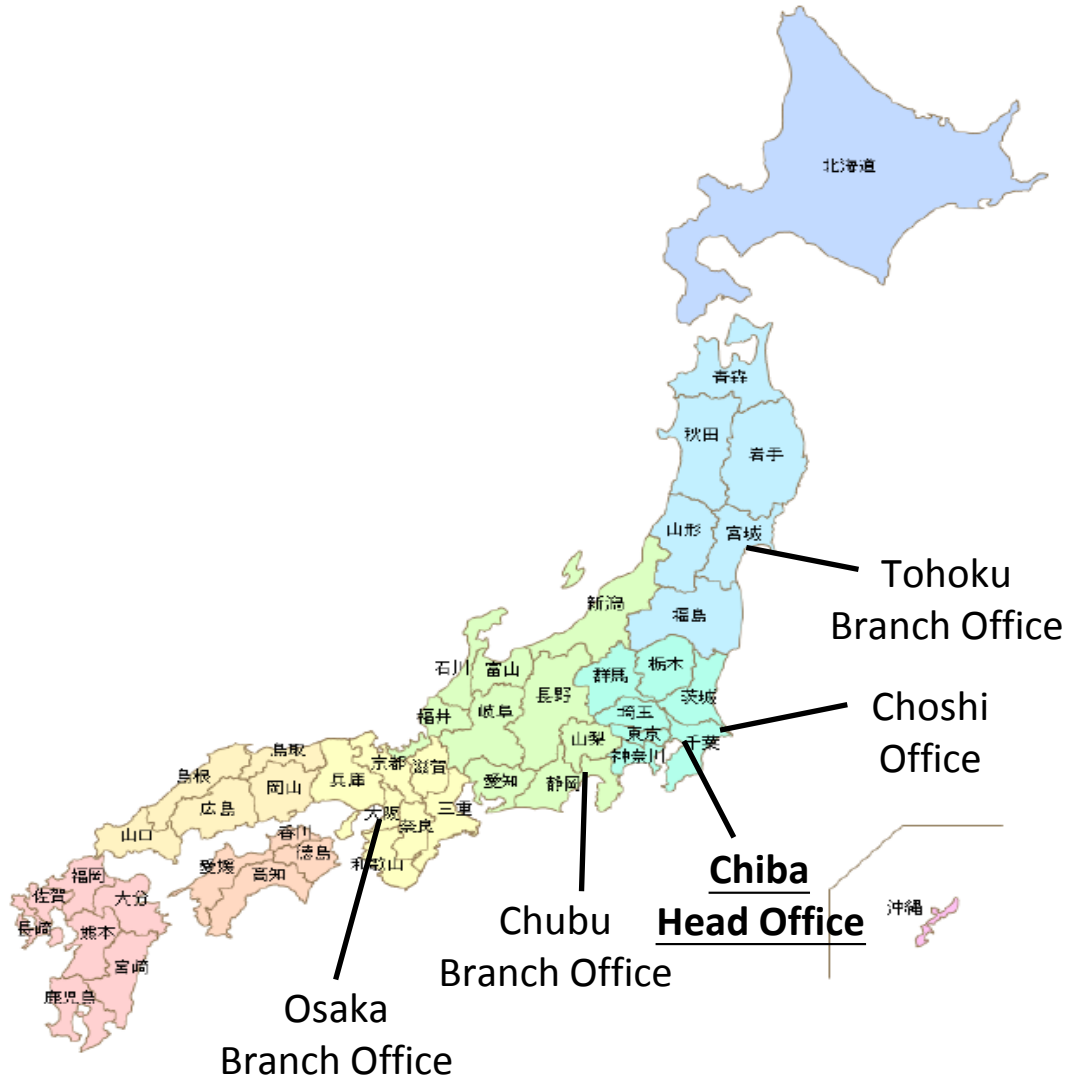
Existing steel sheet pile anticorrosion work



Sewerage and construction work



Climax policy chest wall fortification



Head Office

---

〒260-0013 7th floor, Fujimotodaiichiseimei Building, 3-3-1, Chuo, Chuo-ku, Chiba City, Chiba Prefecture  
TEL: 043-225-8501 FAX: 043-225-8503

Office

---

○ Tohoku Branch Office

〒985-0844 1-3-2 Miyauchi, Tagajo City, Miyagi Prefecture  
TEL: 022-367-7361

○ Choshi Office

〒288-0025 2-2 Shiomicho, Choshi City, Chiba Prefecture  
TEL: 0479-26-4250

○ Chubu Branch Office

〒417-0015 3-2 Suzukawacho, Fuji City, Shizuoka Prefecture  
TEL: 0545-32-6171

○ Osaka Branch Office

〒551-0023 1-11-8 Tsurumachi, Taisho-ku, Osaka City, Osaka Prefecture TEL:  
06-6552-9001